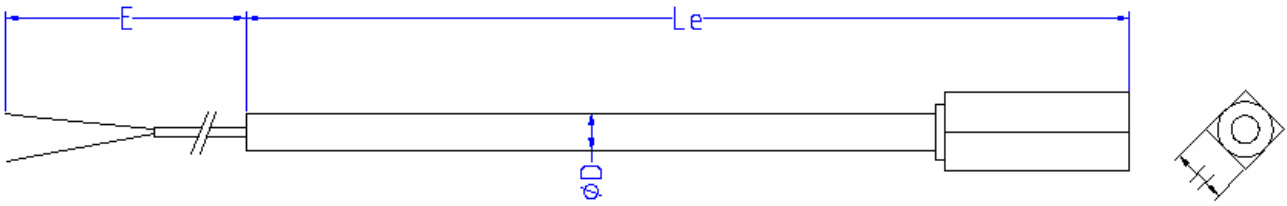
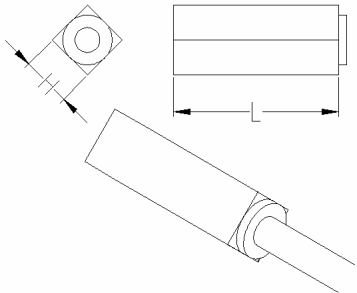


BOILER AND FURNACE THERMOCOUPLE

STRAIGHT WITH Square TIP TS51 – TYPE WT



FEATURES		TECHNICAL SPECIFICATIONS										
<p>High quality thermocouple element with MgO mineral insulated metal sheathed cable, providing excellent stability and reproducibility. The correct choice of sheath material will strongly influence the stability and the life time of the thermocouples.</p> <p>The unique properties make this basic element ideally suited for a wide variety of applications up to 1200°C depending on thermocouple type and metal sheath.</p> <p>The thermocouple element is fully bendable.</p>		<ul style="list-style-type: none"> • Max. temperature depending on thermocouple type and metal sheath • Minimum R_{ins} : 1000 MΩ at 500 VDC, ambient • Standard accuracy IEC 584 class 1 • Connection wire: ANSI / IEC / DIN • With special tip for welding on process pipes 										
		Thermocouple types			General purpose							
		K / N										
		According to IEC 584										
ORDERING INFORMATION												
TC	K		K		K		K		N		N	
	NiCr – NiAl		NiCr – NiAl		NiCr – NiAl		NiCr – CuNi		NiCrSi – NiSi		NiCrSi – NiSi	
Sheath	M2110		M0601		M0809		M0001		M0809		M0001	
	AISI – 310		Inconel 600		Hastelloy X		HR160		Hastelloy X		HR160	
Diameter	3	3.2 1/8"	4.5	4.8	6	6.35 1/4"	8	9.53 3/8"	12.7 1/2"	Other on request		
	Hot junction	Individual isolated (I)			Common isolated (CI)			Grounded (G)				
Hot junction electrically isolated from and shielded by the sheath			Multiple hot junctions joined to one hot junction electrically isolated from and shielded by the sheath			Hot junction welded to the sheath						
Colour Code	ANSI		IEC		DIN							
	ANSI – MC96-1		IEC 584-1		DIN 43714							
Wire	M00		M01		M02		M03		OPTIONS Overall stainless steel braiding			
	PVC		Teflon®		Kapton®		Glass fiber					
	polyvinyl		extruded FEP		polyimide tape		resin impregnation					
	max. +105°C		max. +260°C		-80° +360°C		max. +480°C					
Transition	Stainless steel. Same diameter as Mi cable for OD >4.8 mm . Otherwise OD9.53 mm									Other on request		
	Standard potting compound: max. 120°C											

Weld on type												
Specification								-standard length 40 mm -standard : 12x12 mm -Material : same as thermocouple -option : other dimensions				
TC model	TC type	(S) Single (D) Dual (T) Triple	Diameter	Sheath	Hot junction	Le	Colour code	Wire	AWG	E	Options	
K	FD51	TC WT	S	D6.0	M0601	I	275	ANSI	M02	24	800	
	FD51	TC WT										
Options												
Code	Description											
KK	Adjustable compression fitting		Please indicate process thread									
PR	Protection sleeve		Refrex® 1200 Braiding sleeving Alumina-Boria-Silica fiber retains strength and flexibility at continuous temperature up to 1100°C Refrex® 1400 Braiding sleeving Alumina-Boria-Silica fiber retains strength and flexibility at continuous temperature up to 1371°C Other on request									
WC#	Welding clip + number		Same material as thermocouple sheath									
CON	STD		No connection head									
	S10/S16-N110-E407		Alu head hinged / Alu screwed type with nipple union nipple									
	S20/S26-N110-E407		Alu head hinged / Alu screwed type with nipple lock nut									
	XXX		Other on request									
CF	Adjustable compression fitting		Mounted in union / nipple									
PSH	Pre shaping of thermocouple		Specify the requested form									
	SDL / SDR		Side entry down left / down right									
	SUL / SUR		Side entry up left / up right									
	BDL / BDR		Bottom entry down left / down right									
	TUL / TUR		Top entry up left / up right									
HC	Heath shield		Standard material SS310 . Other on request									
How to order												
Process connection	Protection sleeve	Welding clips an N°	Connection head	Compression fitting	Pre shape	Form	Heath shield					
KK ¼"NPT	PR Refrex1200	WC-3	STD	CF	PSH	BDL	000					