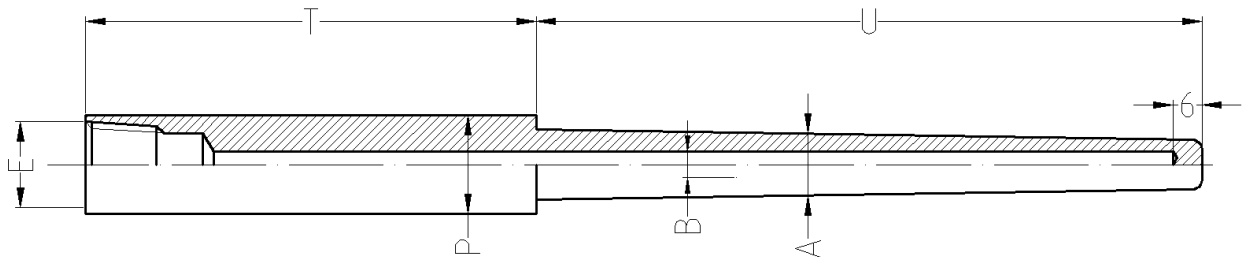
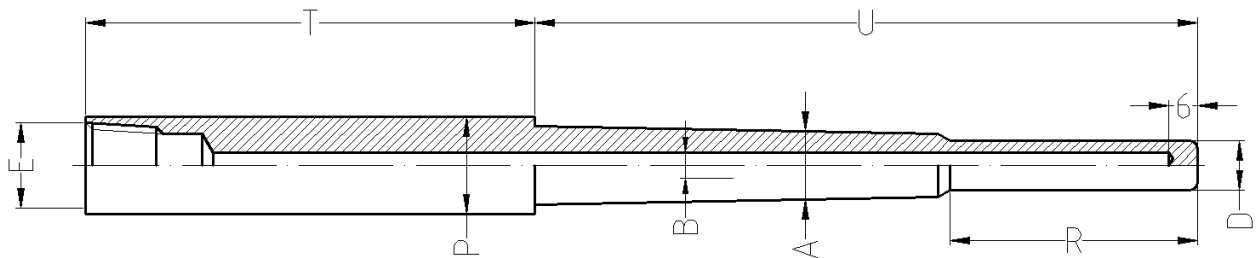


DRILLED BAR STOCK THERMOWELL BORED – SOCKET-WELD – TAPERED

BST (Bored Socket-weld Tapered)



BSTR (Bored Socket-weld Tapered Reduced)



Features

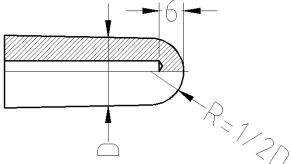
Our thermowells are machined and drilled from solid bar stock. This results in a non-welded unit. High accuracy machines are used to ensure concentricity of the bore with respect to the outside diameter and a consistent wall thickness over the full length of the thermowell.

Our bar stock thermowells with tapered stem have been designed for various fluids and pressure applications.

Metric and fractional connections.

Technical specifications

- Tolerances : all dimensions +/- 1 mm except B : +/- 0.15 mm
- Standard finish $1.6 < Ra < 3.2 \mu$
- Material : wide range of materials available as per DIN 10088 /AISI-ASTM and many others
- Reduced tip : OD 12 mm over length R in mm

ORDERING INFORMATION							
Materials	M2101	M2103	M2108	M2118	M0601	M0703	M0803
	SS304L	SS321	SS316L	SS310S	Inconel 600	Incoloy 800HT	Hastelloy C22
	1.4307	1.4541	1.4404/1.4435	1.4845	2.4816	1.4959	2.4605
Welding Connection diameter	P20	P25	P05	P06	P07		Other
	20 mm	25 mm	½" (21.3 mm)	¾" (26.7 mm)	1"(33.4 mm)		
Tapering	TA3	TA4	TA3	TA1	TA3		TAC
	A = 16→12	A = 18→12	A = 16→12	A = 22→19	A = 28→22		Customer spec
Instrument Connection	E205	E405	Other			Domed Tip: 	
	½" G	½" NPT					
Bore	6.5	7					
Options	Ra	Domed tip					
	Indicate value stem	DT					

Code	Certificates
Q701MC	Material certificate En10204-3.1
Q625ND	External pressure test report (liquid)
Q610ND	Internal pressure test report (liquid)
Q665NT	PMI testing after construction by third party
Q820CC	Test report EN10204-2.2
Q120ED	Wake frequency calculation on process condition

HOW TO ORDER (example)			
Code	Description	Example	Your code
Type	Thermowell type	BSTR	
Material	Thermowell material SS316L	M2108	
Welding Connection	Diameter for welding part 20 mm	P20	
Instrument connection	Connection for the instrument ½"NPT	E405	
B	Bore diameter 6.5 mm	B6.5	
U	Length under process thread (R included)	U150	

R	Reduced tip length in mm if required	R30	
T	Total length	T80	
TA	Tapering 19>17 mm	TAC 19>17	
Options	Domed tip	DT	
Q701MC	Material certificate EN10204-3.1	Q701MC	

Ordering example

BSTR M2108 P20 E405 B6.5 U150 R30 T80 TAC19>17 DT Q701MC

For all options: please contact Rodax