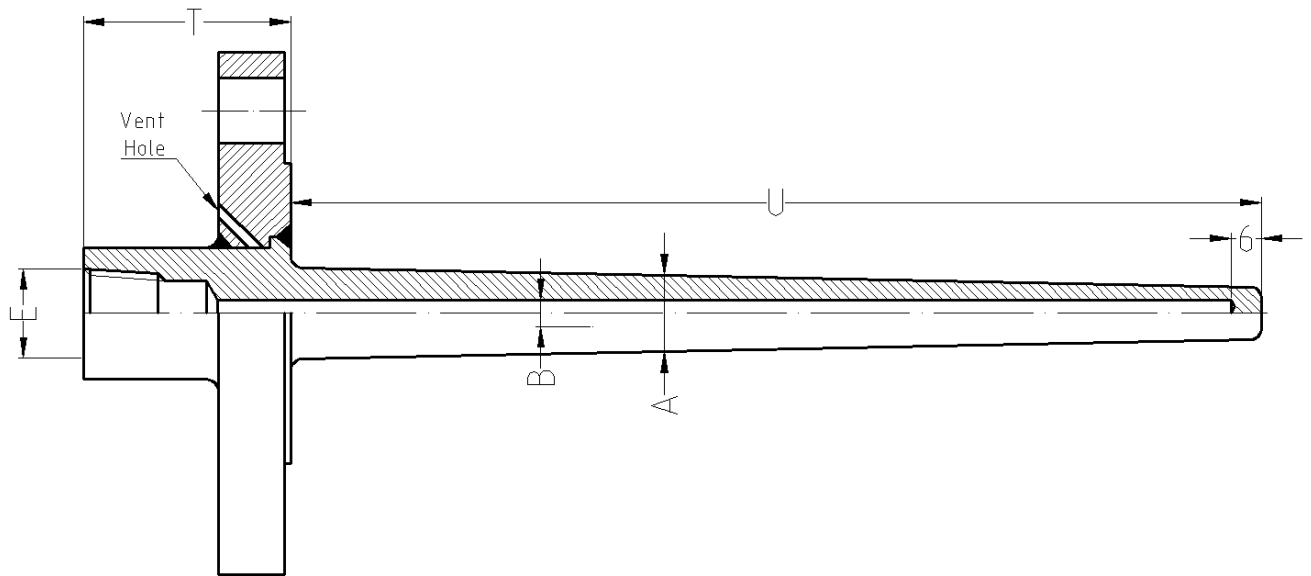
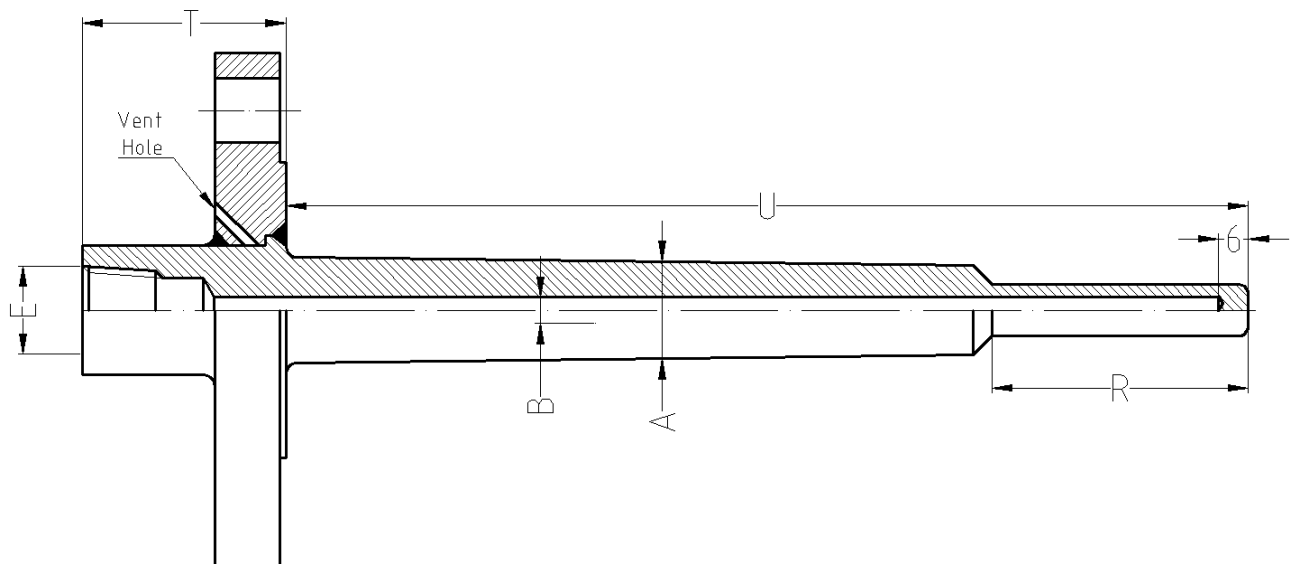


**DRILLED BAR STOCK THERMOWELL
REINFORCED - BORED – FLANGED – TAPERED**

RBFT (Reinforced Bored Flanged Tapered)



RBFTTR (Reinforced Bored Flanged Tapered Reduced)



Features

Reinforced thermowells are designed in order to increase safety for your application
Our reinforced thermowells are machined and drilled from solid bar stock. High accuracy machines are used to ensure concentricity of the bore with respect to the outside diameter and a consistent wall thickness over the full length of the thermowell.
Our bar stock reinforced thermowells with tapered stem have been designed for various fluids and pressure applications.
Metric and fractional connections are available.

Technical specifications

- Tolerances : all dimensions +/- 1 mm except B : +/- 0.15 mm
- Standard finish $1.6 < Ra < 3.2 \mu$
- Material : wide range of materials available as per DIN 10088 /AISI-ASTM and many others
- Reduced tip : OD 12 mm over length R in mm
- Flanges
ANSI B16.5
EN1092-1
DIN2527
- Welding : ASME Section IX – Ed. 2010, Add. 11
ISO15614-1:2004/A1:2008/A2:2012
- Seal Welded

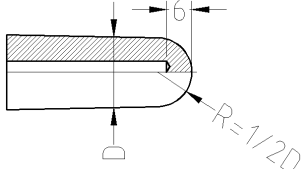
Options

Thermowell calculation to ASME PTC 19.3-TW-2010 is recommended in critical applications

ORDERING INFORMATION

	M2101	M2103	M2108	M2118	M0601	M0703	M0803
Materials	SS304L	SS321	SS316L	SS310S	Inconel 600	Incoloy 800HT	Hastelloy C22
	1.4307	1.4541	1.4404/1.4435	1.4845	2.4816	1.4959	2.4605
Process Connection	A	E	D				
	ANSI	IEC	DIN				

A: Flanges according ANSI B16.5												
Pressure rating [lbs/inch ²]	1	150#	2	300#	3	600#	4	900#	5	1500		
Nominal size (NPS)	07	1"	09	1 1/2"	10	2"	11	2 1/2"	12	3"		
Flange facing	RF	Raised face		FF	Flat face		RTJ	Ring type joint				
Surface finish	ST :stock finish						Other finishes on request					
E: Flanges according EN 1092-1												
Pressure rating [PN]	1	6	2	10	3	16	4	40	5	63	6	100
Nominal size (DN)	07	25	09	40	10	50	11	65	12	80	12	100
Flange facing	FF	Flat face		RF	Raised Face		TG	Tongue/groove		PR	Project/recess	
Surface finish	Form A			Form B1 /B2 *			Form C- Form D			Form E – Form F		
*B1 :PN6 to PN40 B2 : PN63-PN100				A/B1/E/F: Ra 3.2 to max 12.5				B2/C/D/G/H : Ra 0.8 to max 3.2				
D: Flanges according to DIN2527-Facinc acc.to DIN2526-Form F/N=DIN2512-Form V13/R13=DIN2513												
Pressure rating [PN]	1	6	2	10	3	16	4	40	5	64	6	100
Nominal size (DN)	07	25	09	40	10	50	11	65	12	80	13	
Flange facing	FF	Flat face		RF	Raised Face		TG	Tongue/groove		PR	Project/recess	
Surface finish acc.DIN2526	A		B		C		D		E		F	
A no finishing req		B: Rz = 160		C: Rz =160		D: Rz = 40		E : Rz = 16				

	E205	E405	E206	E406					Other			
Instrument Connection	1/2" G		1/2" NPT		3/4" G		3/4" NPT					
	T (mm)						For 1500/2500lbs flanges length T minimum					
	50 mm						70 mm					
Tapering	TA3		TA3		TA1		TA1		TAC			
	A = 16→12		A = 16→12		A = 22→19		A = 22→19		Customer spec			
	TOP SIZE	32	TOP SIZE	27	TOP SIZE	32	TOP SIZE	32	TOP SIZE	Tba		
Bore	6.5		7		Domed Tip:							
Options	Ra		Domed tip									
	Indicate value stem		DT									

Code	Certificates
Q701MC	Material certificate En10204-3.1
Q625ND	External pressure test report (liquid)
Q610ND	Internal pressure test report (liquid)
Q665NT	PMI testing after construction by third party
Q820CC	Test report EN10204-2.2
Q120ED	Wake frequency calculation on process condition

HOW TO ORDER (example)			
Code	Description	Example	Your code
Type	Thermowell type	RBFT	
Flange Norm	ANSI	A	
Material TW	Thermowell material SS316L	M2108	
Material Flange	Flange material (if other than stem)		
Process connection	1 ½"-300lbs	F209	
Facing and finish	Flange facing and finish	RFSF	
Instrument connection	Connection for the instrument ½"NPT	E405	
B	Bore diameter 6.5 mm	B6.5	
U	Length under process flange (R included)	U150	
R	Reduced tip length in mm if required		
T	Length top to process	T50	
TA1	Tapering 22>19 mm	TA1	
Options	Domed tip	DT	
Q701MC	Material certificate EN10204-3.1	Q701MC	

Ordering example

RBFTA M2108 F209 RFSF E405 B6.5 U150 T50 TA1 DT Q701MC

For all options: please contact Rodax