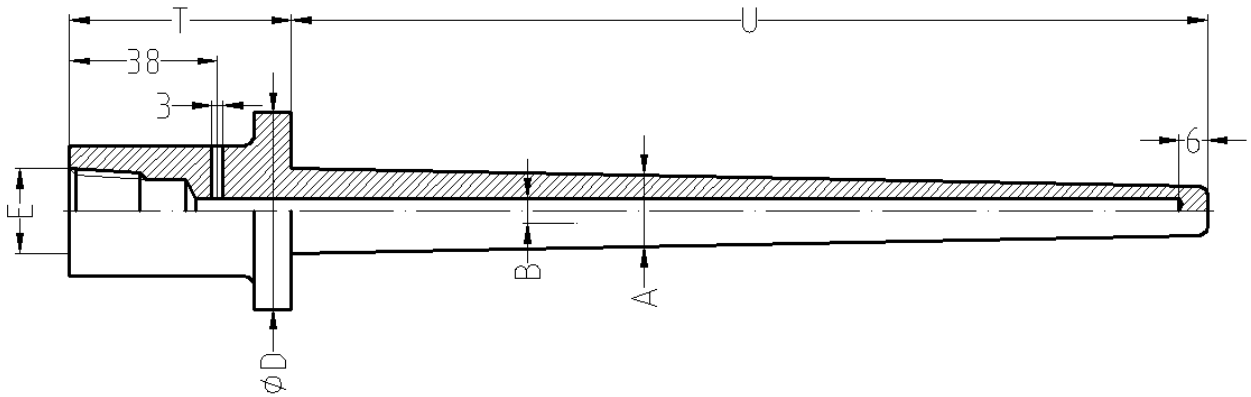
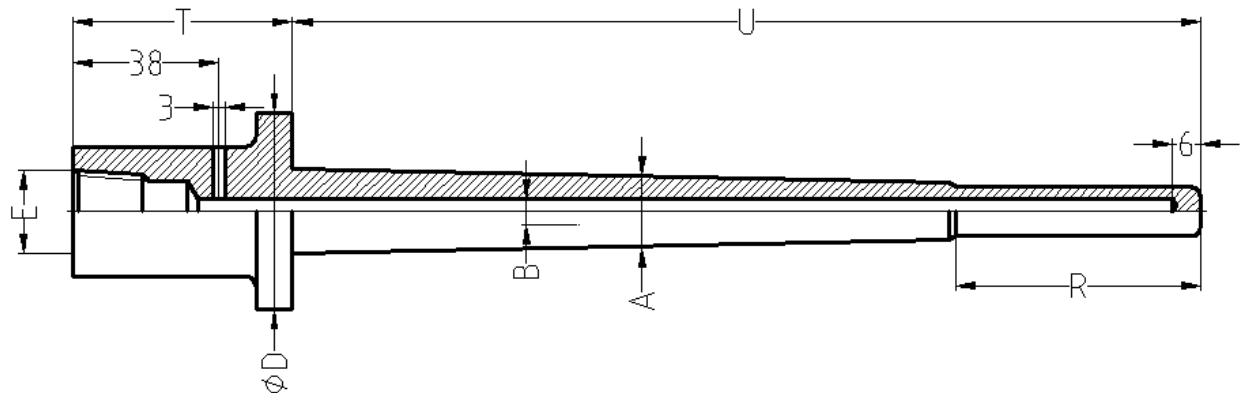


DRILLED BAR STOCK THERMOWELL BORED – VAN STONE – TAPERED

BVT (Bored Van Stone Tapered)



BVTR (Bored Van Stone Tapered Reduced)



Features

Our thermowells are machined and drilled from solid bar stock. This results in a non-welded unit. High accuracy machines are used to ensure concentricity of the bore with respect to the outside diameter and a consistent wall thickness over the full length of the thermowell. Our bar stock thermowells with tapered stem have been designed for various fluids and pressure applications. Metric and fractional connections.

Technical specifications	
-	Tolerances : all dimensions +/- 1 mm except B : +/- 0.15 mm
-	Standard finish $1.6 < Ra < 3.2 \mu$
-	Vent hole D 3 mm
-	T standard 57 mm. Other lengths on request
-	Material : wide range of materials available as per DIN 10088 /AISI-ASTM and many others
-	Reduced tip : OD 12 mm over length R in mm

ORDERING INFORMATION											
Materials	M2101	M2103	M2108	M2118	M0601	M0703	M0803				
	SS304L	SS321	SS316L	SS310S	Inconel 600	Incoloy 800HT	Hastelloy C22				
	1.4307	1.4541	1.4404/1.4435	1.4845	2.4816	1.4959	2.4605				
STANDARD DIMENSIONS											
D flange		Backing flange		TA1	B	Flange thickness		Extension diam.			
2"	50 mm	1"		22 mm > 19 mm (7/8" > 3/4")	6.5 mm (1/4")	9.53 (3/8")		1.315"	33.4		
2 7/8"	73 mm	1 1/2"						1.900"	48.3		
3 5/8"	92 mm	2"						2.394"	60.8		
Instrument Connection	E205	E405	Other								
	1/2" G	1/2" NPT									
Bore	6.5	7									
Options	Ra	Domed tip									
	Indicate value stem	DT									
CF: Cover Flanges according ANSI B16.5 type Lap joint											
Pressure rating [lbs/inch ²]	1	150#	2	300#	3	600#	4	900#	5	1500	
Nominal size (NPS)	07	1"	09	1 1/2"	10	2"	11	2 1/2"	12	3"	
Materials	M2101	M2108	M2502								
	SS304L	SS316L	A105								
	1.4307	1.4541	1.0432								

Code	Certificates
Q701MC	Material certificate En10204-3.1
Q625ND	External pressure test report (liquid)
Q610ND	Internal pressure test report (liquid)
Q665NT	PMI testing after construction by third party
Q820CC	Test report EN10204-2.2
Q120ED	Wake frequency calculation on process condition

HOW TO ORDER (example)			
Code	Description	Example	Your code
Type	Thermowell type	BVT	
Material	Thermowell material SS316L	M2108	
D Flange	Diameter flange part 50 mm	D50	
Instrument connection	Connection for the instrument 1/2"NPT	E405	
B	Bore diameter 6.5 mm	B6.5	
U	Length under process thread (R included)	U150	
R	Reduced tip length in mm if required		
T	Length top to process standard 57 mm	T57	
TA1	Stem diameter tapered 22 > 19 mm	TA1	
Options	Domed tip	DT	
Cover Flange	2"-150 lbs in SS316L	CF110 M2108	
Q701MC	Material certificate EN10204-3.1	Q701MC	

Ordering example

BVT M2108 D50 E405 B6.5 U150 T57 TA1 DT F110 M2108 Q701MC

For all options: please contact Rodax